

# I Love Us in December

## Quilt Block

### Read All Instructions Prior to Beginning

All seams are 1/4". Use a small stitch (I use 1.8) in a neutral thread color that matches your background fabric.

### Cutting Instructions

Finished size 12" square. This Christmas block is a combination of paper piecing and appliqué. Use Pink, blue, orange, red, green, and black scraps for the light bulb appliqué pieces.

#### Half Square Triangle White Background Fabric:

Cut three 3" squares for Half Square Triangles.

#### Red Fabric:

Cut three 3" squares for Half Square Triangles.

#### Medium Green Fabric

Cut one strip 2 1/2" x WOF. Sub-cut into six 2 1/2" x 6 1/2" rectangles.

#### Dark Multi-Color Green Fabric

Cut one strip 2 1/2" x WOF. Sub-cut into five 2 1/2" x 6 1/2" rectangles.

#### Black Fabric for Trunk

Cut one 1 1/2" x 3 1/2" rectangle.

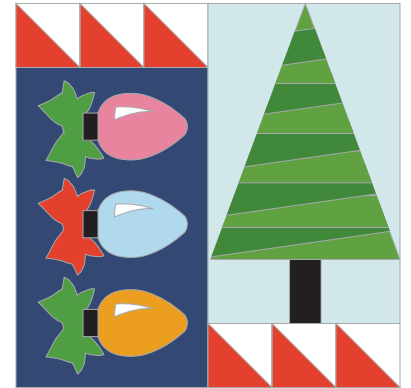
#### Light Multicolor Fabric for Tree Background

Cut two 3 1/2" squares.

Cut one 4" x 8" rectangle and cut once on the diagonal.

#### Dark Multi-Color Navy Background for Lights

Cut one 6 1/2 x 10 1/2" rectangle.



### Piecing Instructions

#### Half Square Triangles

1. To create the Half Square Triangles, draw a diagonal line across the wrong side of the 3" background squares.

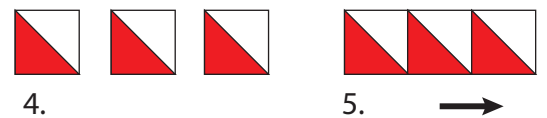
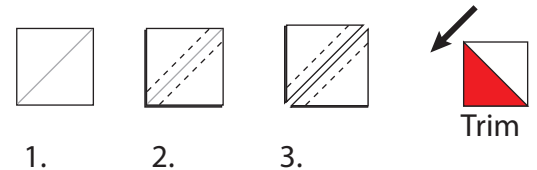
2. Pair with a red 3" square and with right sides together, sew a 1/4" seam on each side of the drawn line.

3. Cut on the drawn line to create two Half Square Triangles. Press the seam toward the red. Make six Half Square Triangles.

**TRIM** your Half Square Triangles by lining up the seam with the 45° line on your ruler. Trim to 2 1/2". Repeat for the dark blue, medium blue, medium purple, and dark purple 3" squares.

4. Arrange three red/white Half Square Triangles like the diagram.

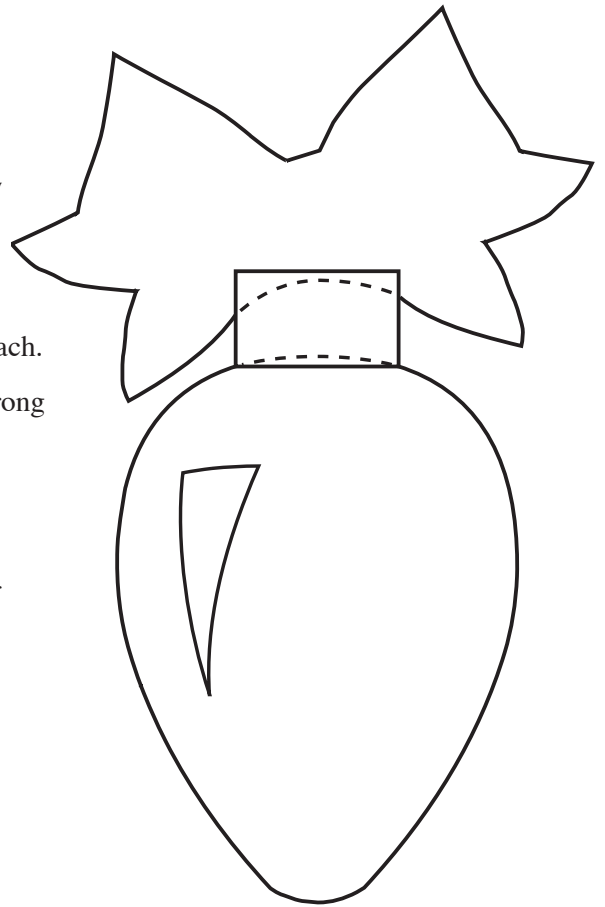
5. Sew the three Half Square Triangles as shown. Make two units of the three Half Square Triangles. Press toward the red.



## Appliqué Instructions

The appliqué design will be in reverse to what it will look finished.

1. Using light, double-sided fusible web, trace the appliqué pieces below onto the paper liner with at least a half an inch space between each piece. *Do not overlap the pieces. Trace light bulb, top, bow, and highlight separate from each other.*
4. Trim out each piece leaving about a quarter of an inch space around each.
5. Follow the directions of your product. Stick the fusible piece to the wrong side of your fabric. Cut out on the drawn line.
6. Peel off the paper backing and arrange your appliqué pieces on your background. Pay close attention to which pieces overlap the other. Reposition until you're pleased with the arrangement. Press for 10-20 seconds with steam, on cotton setting or according to the directions of your double-sided fusible web product.
7. Using coordinating threads, sew a blanket stitch around each of the appliquéed items.



## Paper Piece Instructions for the Pleated Tree

If you've not paper pieced before, or need a refresher, review the instructions in the February block.

Start by preparing your fabrics. Press the 2 1/2" x 6 1/2" strips in half the long way, with the wrong side of the fabric on the inside (like preparing binding). Using your favorite paper or foundation piecing technique, start with piece one, the trunk. Sew the background piece 2 and then the background piece 3 in place.

With the first green folded 6 1/2" strip, align the raw edges along the solid line of the base of the tree. Sew on the dotted line. Position a different green folded strip with the raw edges along the solid line above the base and sew on the dotted line. Repeat the same steps all the way up the tree.

After the strips of fabric have all been added, creating a wonky pleated tree, add background pieces 15 and 16. Trim on the outside solid line.

## Assembling the Block

1. Sew the Half Square Triangles unit to the top of the Light Bulb block.
2. Sew the Half Square Triangles unit to the bottom of the Pleated Tree block.
3. Sew the Light bulb half the the Pleated Tree half and press.

*Fantastic!*

