

Willow Lake Kit Cutting Guide

Follow the cutting guide to ensure you'll have large enough fabric pieces for the later months. Most fat quarters have a generous amount. There are just a few that are tight.



Forest Green, R062315-0112
1 Fat Quarter
For Months 1, 4, 6, 8, 9, 10, 12

Month 4 6" x 10"	Month 1 12" x 8"
	Month 12 2" x 12"
Month 8 6" x 8"	Month 6 5" x 12"
	Month 10 7" x 12"
Month 9 6" x 4"	Forest Green



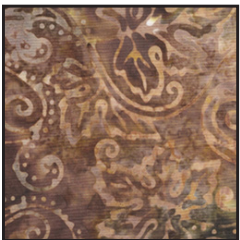
Harvest Gold, R062340-0113
1 Fat Quarter
For Months 1, 3, 4, 5, 6, 9, 10, 12

Month 1 6" x 22"	extra	Month 10 5" x 3"	Month 4 3" x 5"
	Month 8 9" x 13"		Month 6 3" x 3"
			Month 9 3" x 5"
			Month 12 3" x 3"
	Month 3 12" x 6"		Harvest Gold



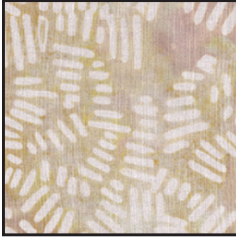
Dark Bitter Brown Leaves
R062362-0112, 1 Fat Quarter
For Months 1, 6, 7, 8, 10, 12

Month 10 7" x 12"	Month 7 7.5" x 13"	Month 2 3.5" x 15"
Month 8 7" x 10"	Month 6 7.5" x 2"	
	Month 1 7" x 11"	
Dark Bitter Brown		



Golden Brown, R062315-0113
1 Fat Quarter
For Months 2, 8, 9, 10, 11, 12

Month 2 11" x 5"		extra
Month 12 4" x 3"	Month 9 7" x 7"	Month 11 7" x 17"
Month 10 4" x 4"		
Month 8 11" x 10"		
Golden Brown		



Reserve 1 yard for sashing.
 ½ yard is used for the blocks.
 The ½ yard cutting diagram is below.

Tan Hatch Marks, R062351-0146
 1 ½ yards for Inner Border and
 Months 1, 2, 6, 8, 9, 10, 12

Extra	Month 9 13" x 14"
Month 6 5" x 14"	
	Month 2 13" x 8"
Month 8 5" x 14"	Month 1 13" x 22"
Month 10 5" x 10"	
Tan Hatch Marks (Same as sashing print.)	



Watery Blue Gray,
 R062339-0143, ¾ yard
 For Months 2, 4, 9

extra
Month 9 13.5" x 15"
Month 4 13.5" x 13.5"
Month 2 13.5" x 13.5"
Watery Blue



Light Gray Leaves, R062362-0146
 1 Fat Quarter
 For Months 2, 3, 4, 10

extra	Month 2 8" x 6"	extra
Month 10 6" x 5"	Month 3 8" x 16"	
Month 4 6" x 12"		



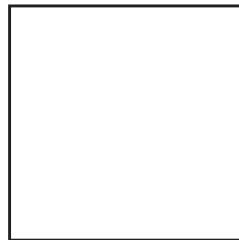
Dark Blue Leaves, R062362-0110
 1 Fat Quarter
 For Months 3, 5, 9, 12

extra	Month 3 9" x 14"	Month 5 7" x 22"
Month 12 2" x 6"		
Month 9 11" x 8"		



Solid Black, C835901-0070
 1 Fat Eighth
 For Months 2, 4, 6, 10, 12

extra		
Month 4 3" x 3"	Month 10 3" x 3"	Month 12 3" x 3"
Month 6 9" x 3"		
Month 2 9" x 5" Solid Black		



Solid White Marshmallow
 C835901-0733, 1 Fat Eighth
 For Months 2, 4, 6, 8, 9, 10

extra	Month 10 3" x 4"	Month 8 3" x 4"
	Month 9 6" x 3"	
	Month 2 6" x 5"	
Month 6 9" x 5"		
Month 4 9" x 5" Solid White		



Green Teal, R06315-0154
 1 Fat Quarter
 For Months 3, 7, 8, 12

extra		
Month 8 7" x 4"		
Month 7 7" x 13"	Month 12 5" x 22"	Month 3 6" x 22"
		Green-Teal



Golden Green Leaves
 R062362-0116, 1 Fat Quarter
 For Months 4, 10, 12

extra	Month 4 6" x 11"
Month 12 5" x 13"	Month 10 13" x 13"
	Golden Green Leaves



Purple-Multi, R062376-0135
 1 Fat Quarter
 For Months 5, 10, 11, 12

Month 5 6" x 7"		
Month 12 7" x 4"		
Month 11 7" x 12"		
	Month 10 4" x 22"	Extra Purple-Multi



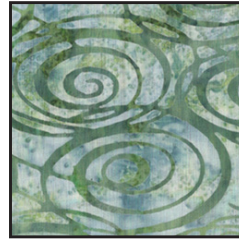
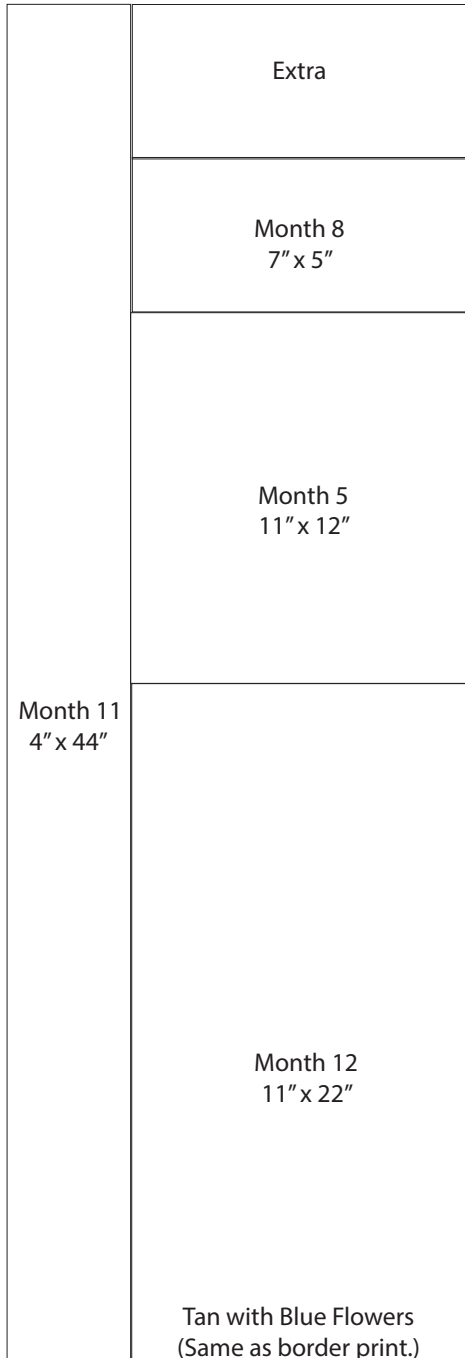
Golden Leaves, R062362-0139
 1 Fat Quarter
 For Months 7, 10, 11

Month 7 8" x 22"	Month 11 10" x 11"
	Month 10 10" x 11"
	Golden Leaves

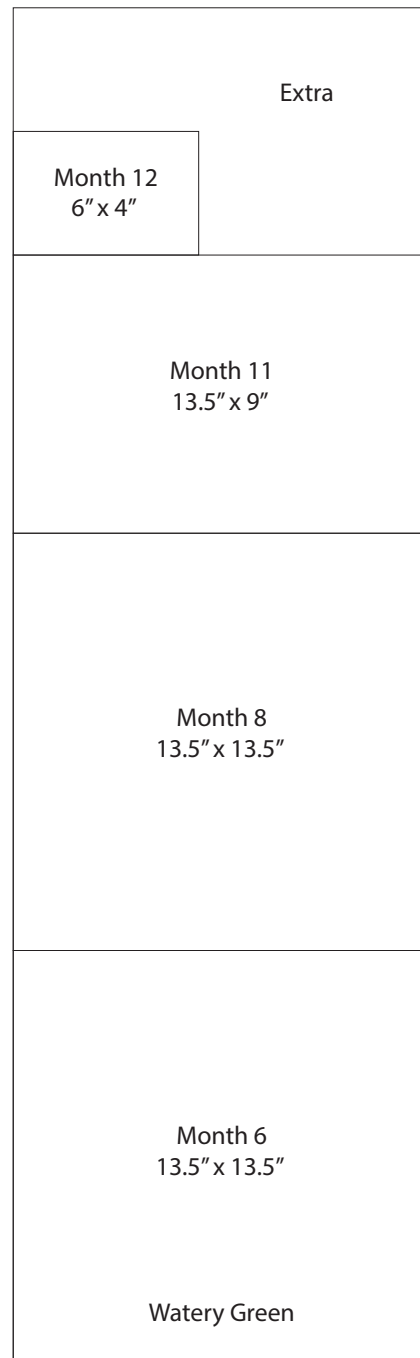


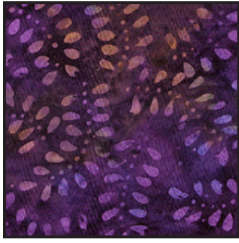
Reserve 1 yard for sashing.
 ½ yard is used for the blocks.
 The ½ yard cutting diagram is below.

Tan with Blue Flowers
 R062352-0147, ½ yard Binding
 1 ½ yards for Border and
 Months 5, 8, 11, 12

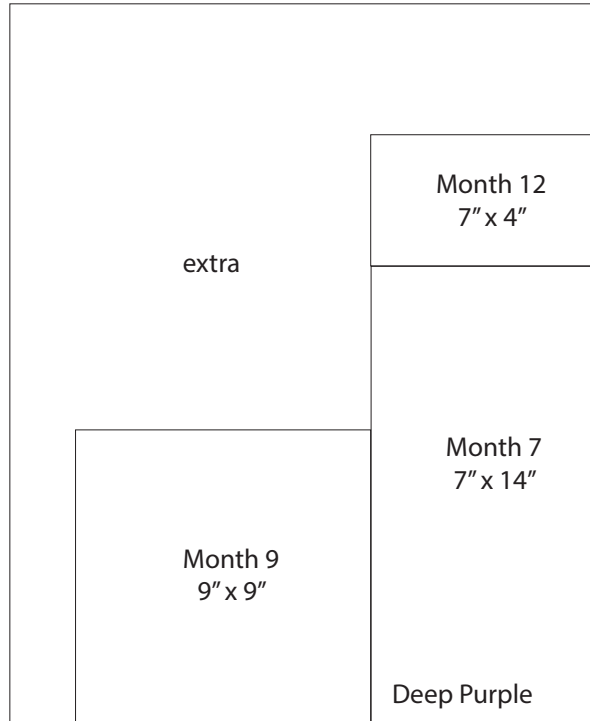


Watery Green, R062339-0120
 ¾ yard
 For Months 6, 8, 11, 12





Deep Purple, R062337-0137
1 Fat Quarter
For Months 7, 9, 12



Tan with Tan Flowers
R062352-0142, 1 Fat Quarter
For Months 7, 11

